



Ymddiriedolaeth Natur
Gogledd Cymru
North Wales
Wildlife Trust



WHAT GARDENERS CAN DO TO PROTECT NATURE

KNOW
WHAT YOU
GROW

STOP
THE
SPREAD

COMPOST
WITH
CARE

PLANT
ALERT

FIND
OUT
MORE

3 easy steps



The **Be Plant Wise** campaign has three easy steps to help gardeners prevent invasive species from escaping gardens and taking hold in the wild.

- know what you grow
- stop the spread
- compost with care



Cronfa
Treftadaeth
Heritage
Fund



Mewn Partneriaeth â
Llywodraeth Cymru
In Partnership with
Welsh Government

KNOW
WHAT YOU
GROW

STOP
THE
SPREAD

COMPOST
WITH
CARE

PLANT
ALERT

FIND
OUT
MORE

KNOW WHAT YOU GROW



Research plants before you buy them to make sure they are suitable for your needs and site conditions, are easy to dispose of, and are not invasive species.

Consider these top tips for **wildlife gardening**.

Never take plants from the wild or bring plants, seeds, or flowers home from abroad. They might be invasive species and may cause damage to nature and wildlife.

Be careful when you share plants with friends and family, as you may accidentally pass on or receive invasive plants, pests, or plant diseases.

Did you know that it's **against the law** to share or sell some garden and pond plants?



TOP

**KNOW
WHAT YOU
GROW**

**STOP
THE
SPREAD**

**COMPOST
WITH
CARE**

**PLANT
ALERT**

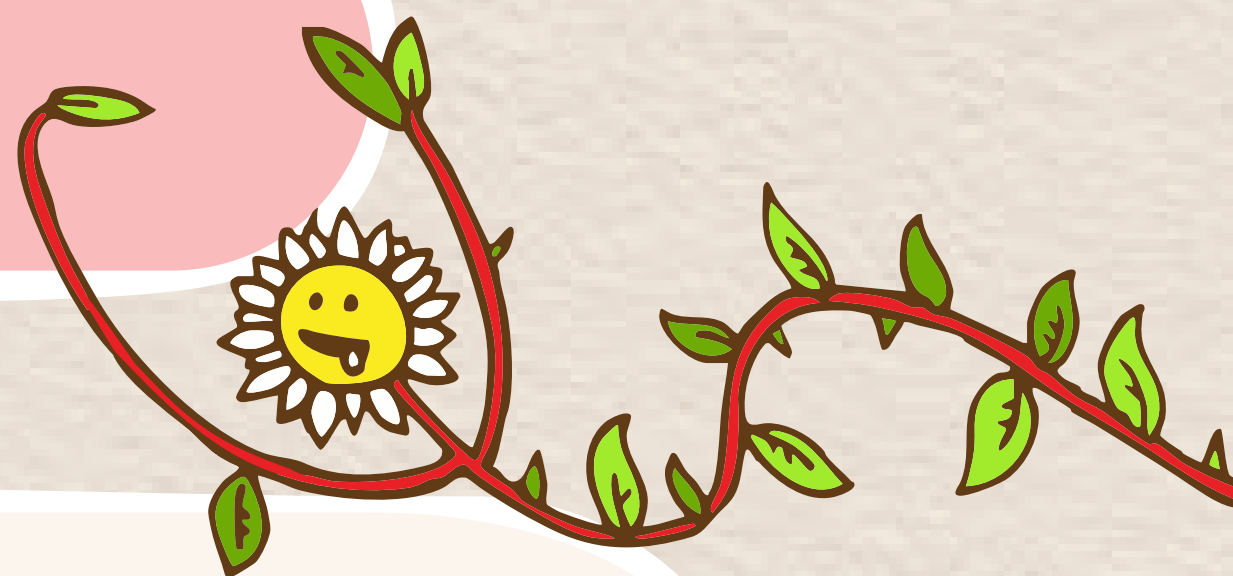
**FIND
OUT
MORE**

STOP THE SPREAD



If you have an invasive species in your garden, remove runners, seedlings, seed heads and pods. Dispose of them carefully to stop them from spreading.

Do not plant or dispose of any garden plants in the wild.



Position vigorously growing plants away from the edge of your garden or plant them in a container so they can't 'jump the fence'.

Wash garden tools and boots regularly to prevent spreading plant fragments, seeds or plant diseases from one part of the garden to another, into the wild or another garden.

TOP

KNOW
WHAT YOU
GROW

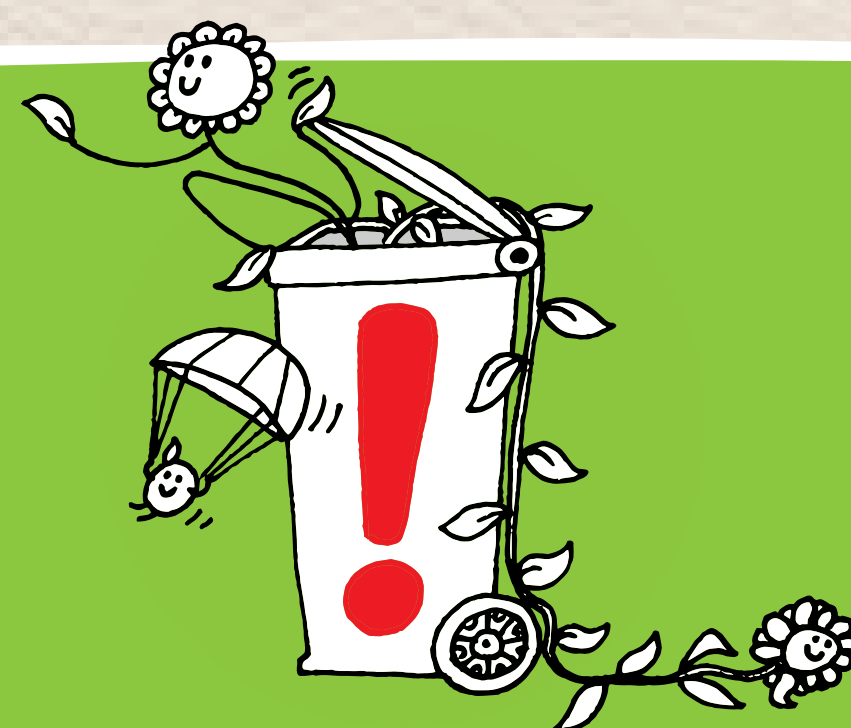
STOP
THE
SPREAD

COMPOST
WITH
CARE

PLANT
ALERT

FIND
OUT
MORE

COMPOST WITH CARE



Home composting is environmentally friendly and the compost will benefit your garden. Check first whether you have any **invasive plants that can't be composted** and find **tips on composting here**. Keep an eye out for re-growth in your compost heap and make sure it is broken down properly before using it in your garden.

Make sure nothing you remove from your garden, pond, or aquarium gets into the wild, you could be breaking the law if it does. Dumping garden waste can have serious irreversible environmental impacts and it's illegal.

Alternatively, most garden plants can go in your council garden waste bin. Be aware that some invasive plants have **extra controls around their disposal**.

TOP

KNOW
WHAT YOU
GROW

STOP
THE
SPREAD

COMPOST
WITH
CARE

PLANT
ALERT

FIND
OUT
MORE

PLANT ALERT



Plant Alert is a citizen science project for gardeners.

You can report plants showing 'invasive behavior' in your garden.



Why report invasive behavior?

In the face of climate change we are likely to find new invasive species in the wild. By helping us better understand 'invasive behavior' in gardens, you can help prevent the impacts of these emerging invasive species. Prevention is better than cure!

Data collected through Plant Alert is used to assess the spread and impact risks of emerging invasive species. The data can also provide gardeners and nurseries with advice on which plants could be difficult to manage in gardens.

Start recording: plantalert.org

TOP