

Rockpool Safari

At low tide, rockpools retain water and provide a refuge for many marine creatures. Remember to respect coastal wildlife, watch where you walk, handle animals with care and return them to where you found them.

Rockpool creatures are adapted to living in a constantly changing environment

Shore Crab

Carcinus maenas



Cranc gwyrdd

Carapace up to 9cm - the length of a crayon

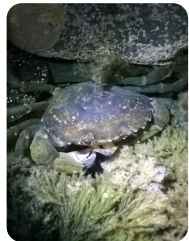


Shore crabs can be different colours depending on their age and if it's breeding season.

Medium sized crab - greenish, orange or red



What to look for:



Shore crabs are typically found in rockpools hiding under rocks or amongst seaweed. They can also be found moving around the shore.

Beadlet Anemone

Actinia equina



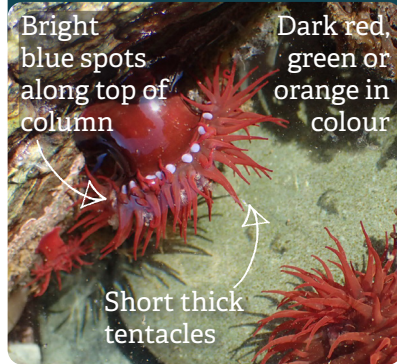
Anemoni gleiniog

Up to 5cm in diameter - the width of a credit card



Beadlet anemones give birth to live young.

Stocky and most often dark red



What to look for:



They are usually found in rockpools or crevices in rocks. With their tentacles retracted they look like blobs of jelly.

Dog Whelk

Nucella lapillus



Gwichiad y cwn

Between 3-6cm - the length of three baked beans



Dog whelks are active predators, drilling into mussels and barnacles.

Sea snail ranging from brown to white to yellow



What to look for:



Usually found on rocks or in crevices near to barnacles or mussels. You may be lucky enough to spot them surrounding their eggs.

Shanny

Lipophrys pholis



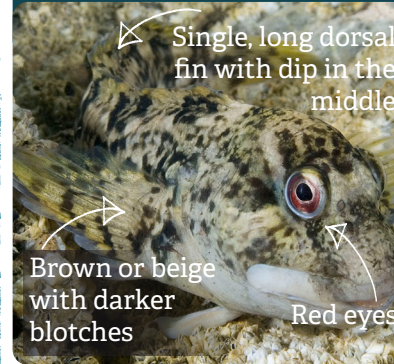
Siani

Up to 15cm in length - the same as a pencil



They can survive out of water at low tide and, if disturbed, they will leap back into the water.

Elongated fish with a large head



What to look for:



You will see these in rockpools peeking from under rocks or amongst seaweed. Occasionally spotted on the shore near rockpools.

Common Prawn

Palaemon serratus



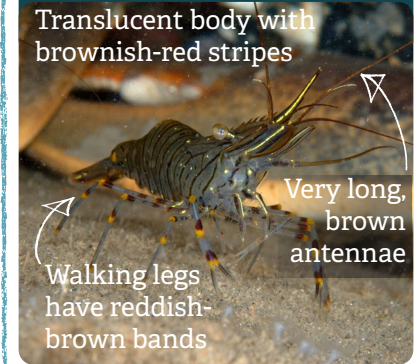
Corgimwch

Up to 11cm in length - the same as an ice lolly stick

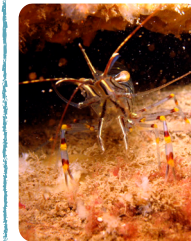


They are scavengers and will eat anything they find from decaying seaweed to dead mussels

Quick moving, shallow prawns



What to look for:



They are typically found in rockpools hiding under rocks or amongst seaweed. Common prawns are very quick and will dart undercover if startled.